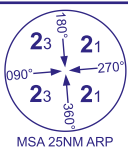
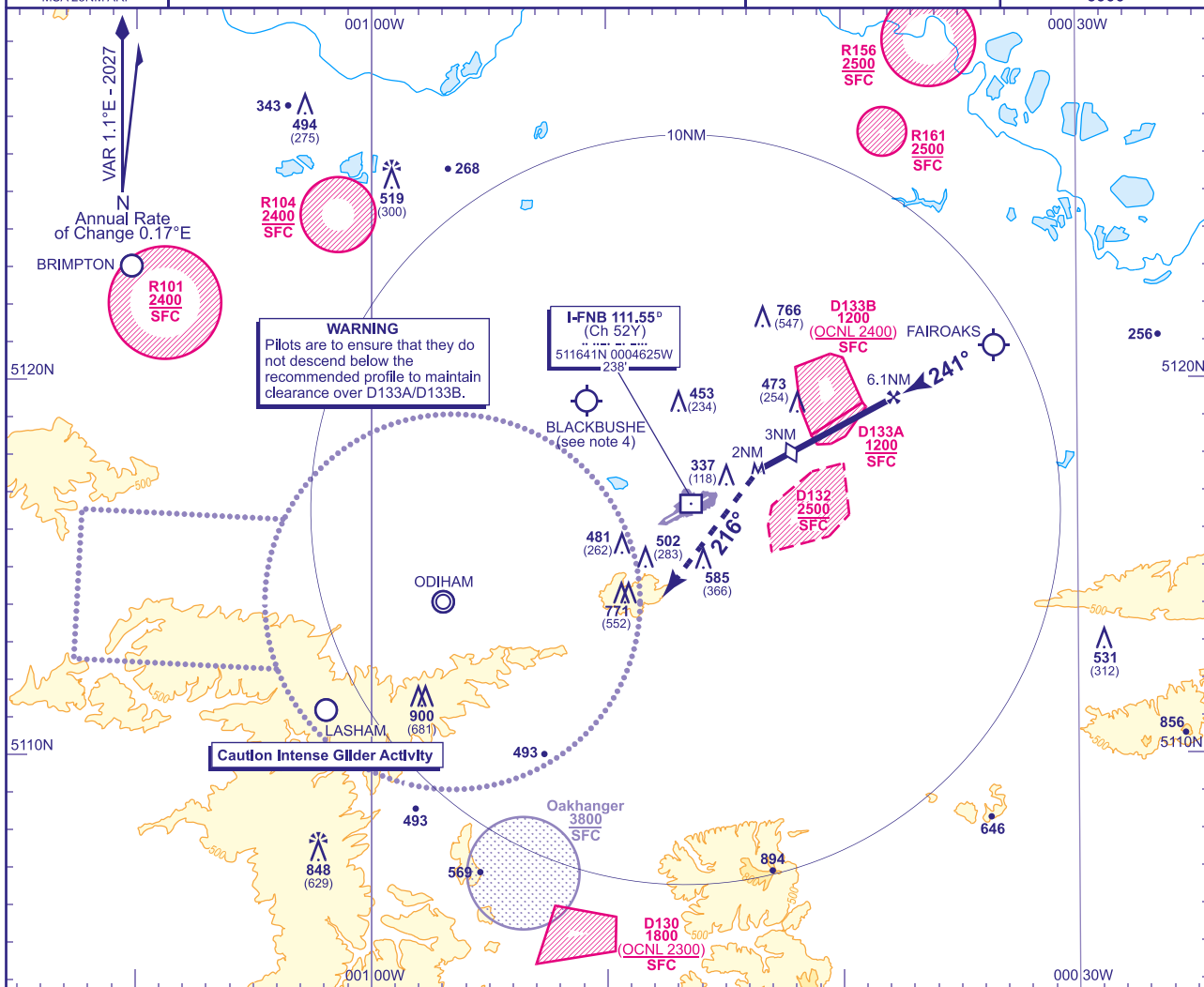


FARNBOROUGH
SRA RTR 2NM Y
RWY 24
(ACFT CAT A,B,C,D)



APP 134.355, 125.250	FARNBOROUGH RADAR	AD ELEVATION 238
TWR 122.780	FARNBOROUGH TOWER	THR ELEVATION 219
RAD 130.055	FARNBOROUGH DIRECTOR	OBSTACLE ELEVATION
ATIS 128.405	FARNBOROUGH INFORMATION	900 AMSL (681) (ABOVE THR)
		BEARINGS ARE MAGNETIC

TRANSITION ALTITUDE
6000

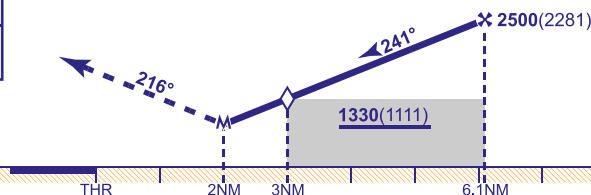


RADAR ADVISORY HEIGHTS Gradient 6.1%, 372FT/NM

NM	6.1	5.0	4.0	3.0 (SDF)
ALT(HGT)	2500(2281)	2080(1861)	1710(1491)	1330(1111)

MAPt RTR 2NM

At the MAPt, turn left onto track 216°, climbing to **3000**, then as directed by ATC.



Aircraft Category		A	B	C	D	Rate of descent	G/S KT	160	140	120	100	80
OCA (OCH)	Procedure	970(751)	970(751)	970(751)	970(751)		FT/MIN	990	870	740	620	500
VM(C)OCA (OCH AAL)	South of RWY 06/24	970(732)	1020(782)	1170(932)	1170(932)							

NOTE

- 1 MSA are based on obstacle/terrain clearance. Pilots are to ensure safe navigation to remain clear of active Danger Areas.
- 2 SUA AIS available on Farnborough Radar 133.440 when open; other times London Information on 124.600.
- 3 CAT B,C and D no circling when EGD132 is active, CAT C and D no circling when EGD133A and EGD133B are active.
- 4 Pilots are reminded of the close proximity of Blackbushe aerodrome, 3.8NM north west of Farnborough and to remain clear due to intense GA activity.
- 5 See Loss of Communication Procedures in EGLF AD 2.22 Flight Procedures.
- 6 Radar Advisory Heights are to Touchdown.
- 7 No turns before MAPt.
- 8 Procedure not available when EGD132 or EGD133B (above **1200**) are active.

CHANGE (1/26): MAG INFO REVISED. MAG HEADINGS. RESTRICTED AREA EGR161 ADDED.

AERO INFO DATE 12 NOV 25

AD 2-EGLF-8-8